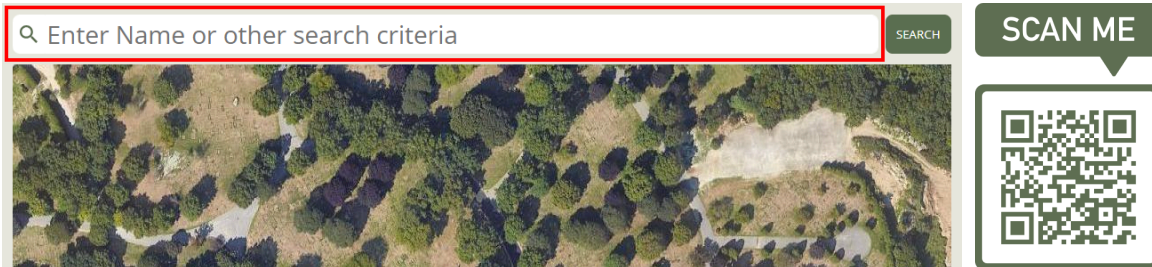




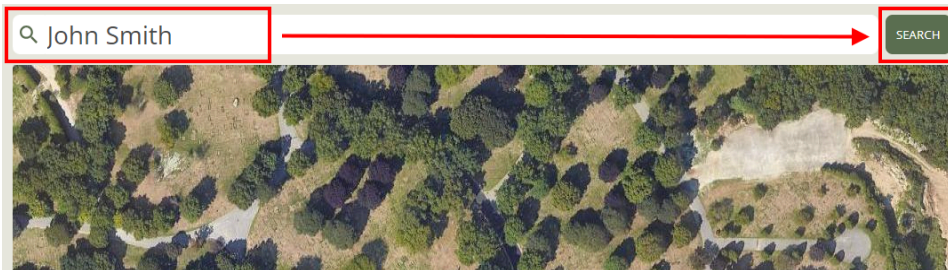
KNOLLWOOD MEMORIAL PARK & ARBORETUM

Guide to Find a Loved One

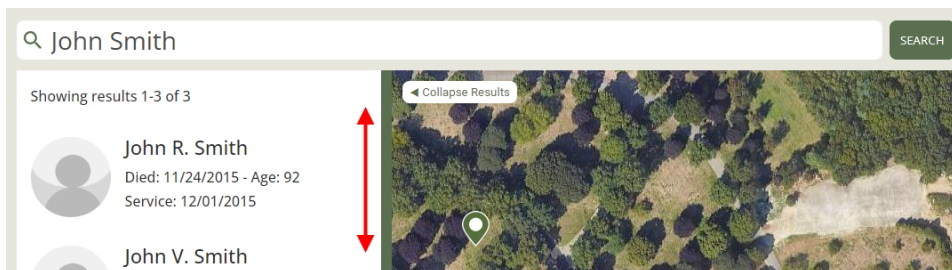
1. Visit knollwoodmemorial.com/burial-search and find the Search bar.



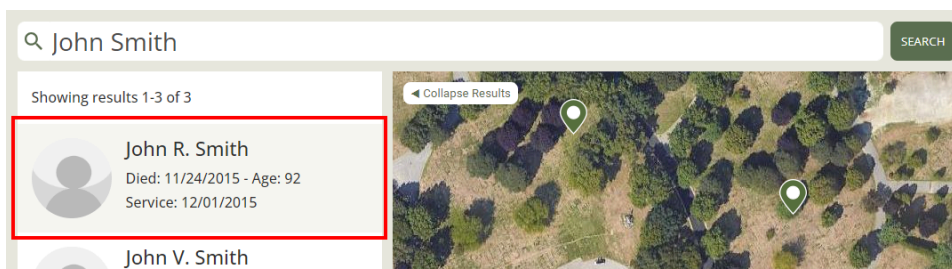
2. Enter the name of your loved one and click **Search**.



3. Scroll through the list of results until you find the name you seek.



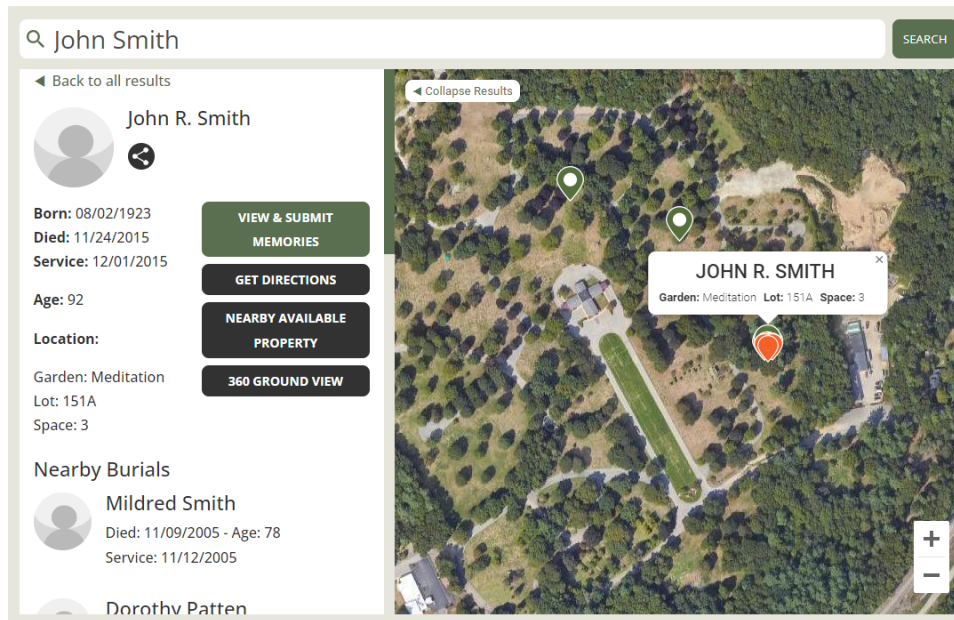
4. To see additional information, including driving directions, 360 ground views, and nearby available property, or to view and submit memories, click on the name of your loved one.



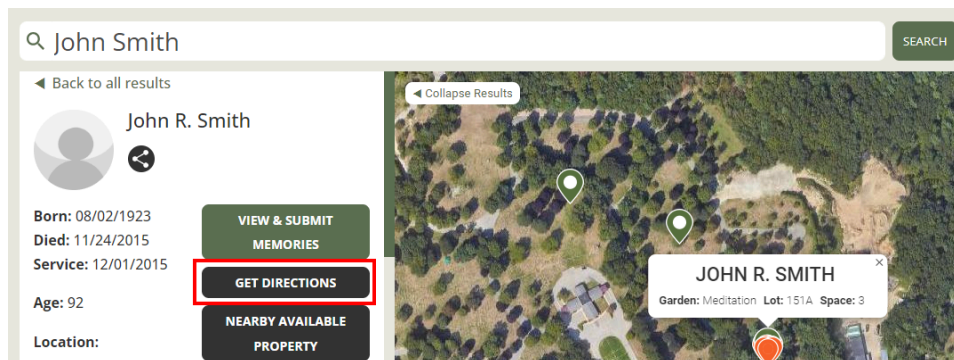


KNOLLWOOD MEMORIAL PARK & ARBORETUM

5. From here, you can use the buttons to **view and submit memories**, see **nearby available properties**, or get **directions** to their burial location.



6. To get directions, click **Get Directions**. This will open Google Maps. Press **Start** to follow the directions to the gravesite.



Tips for using the Find a Loved One search

- Enter the individual's first and last name, or as much of their name as possible.
- If no exact matches are found, the search will bring up results that match part of your search criteria.
- If you know a date or year associated with the person you are trying to locate, you can include it in the search field (for example: Miller 2010). This will first provide search results that include the name Miller and also have 2010 date associated with their record, before showing other potential matches.